



AVA MASTER SERIES

Service of pump

Master P60-80

Needed tools:

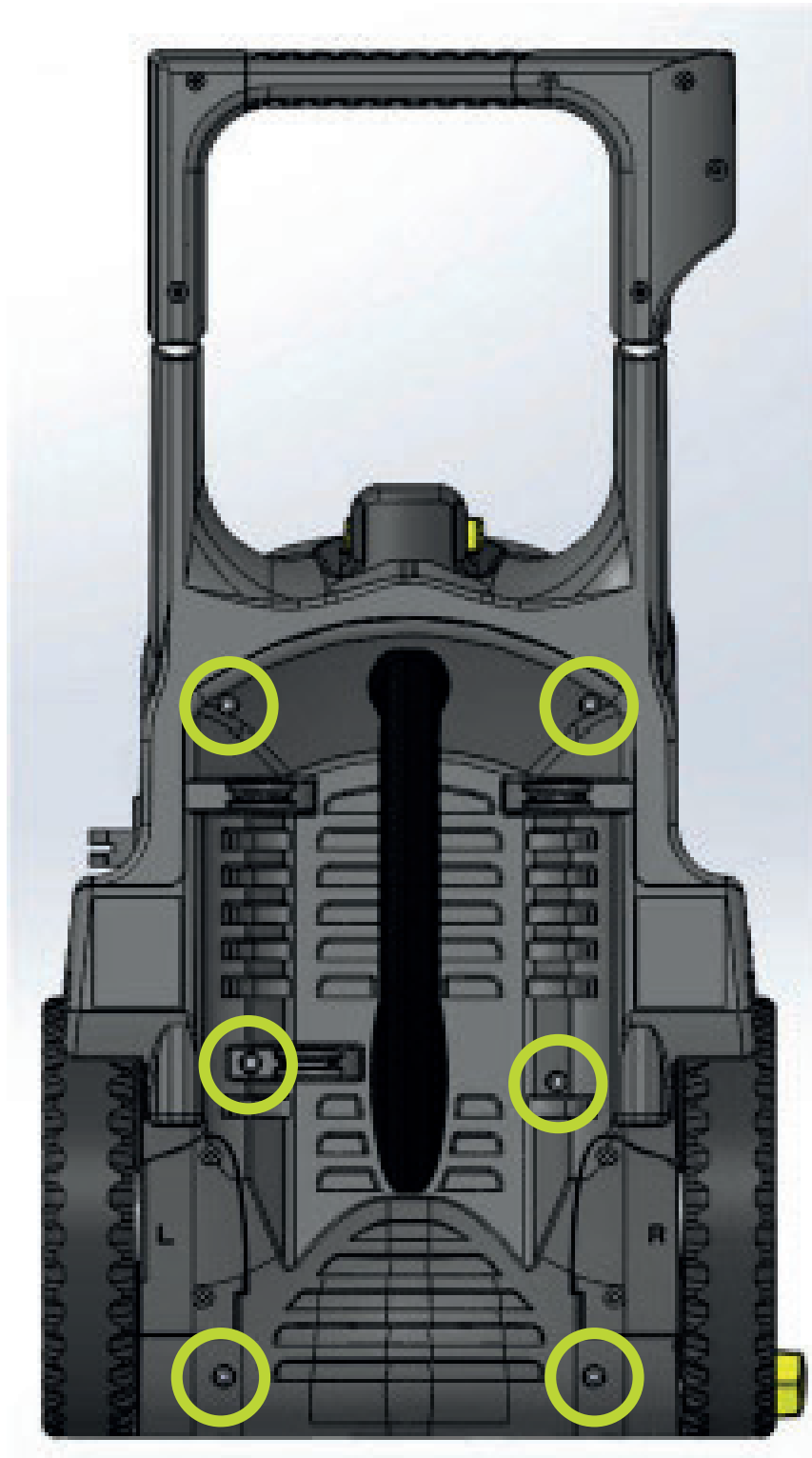
- T25 (torx) screwdriver with a length of 200mm minimum.
- Small flat screwdriver
- Pliers

1

Remove the six screws from the back of the machine as indicated on the drawing.



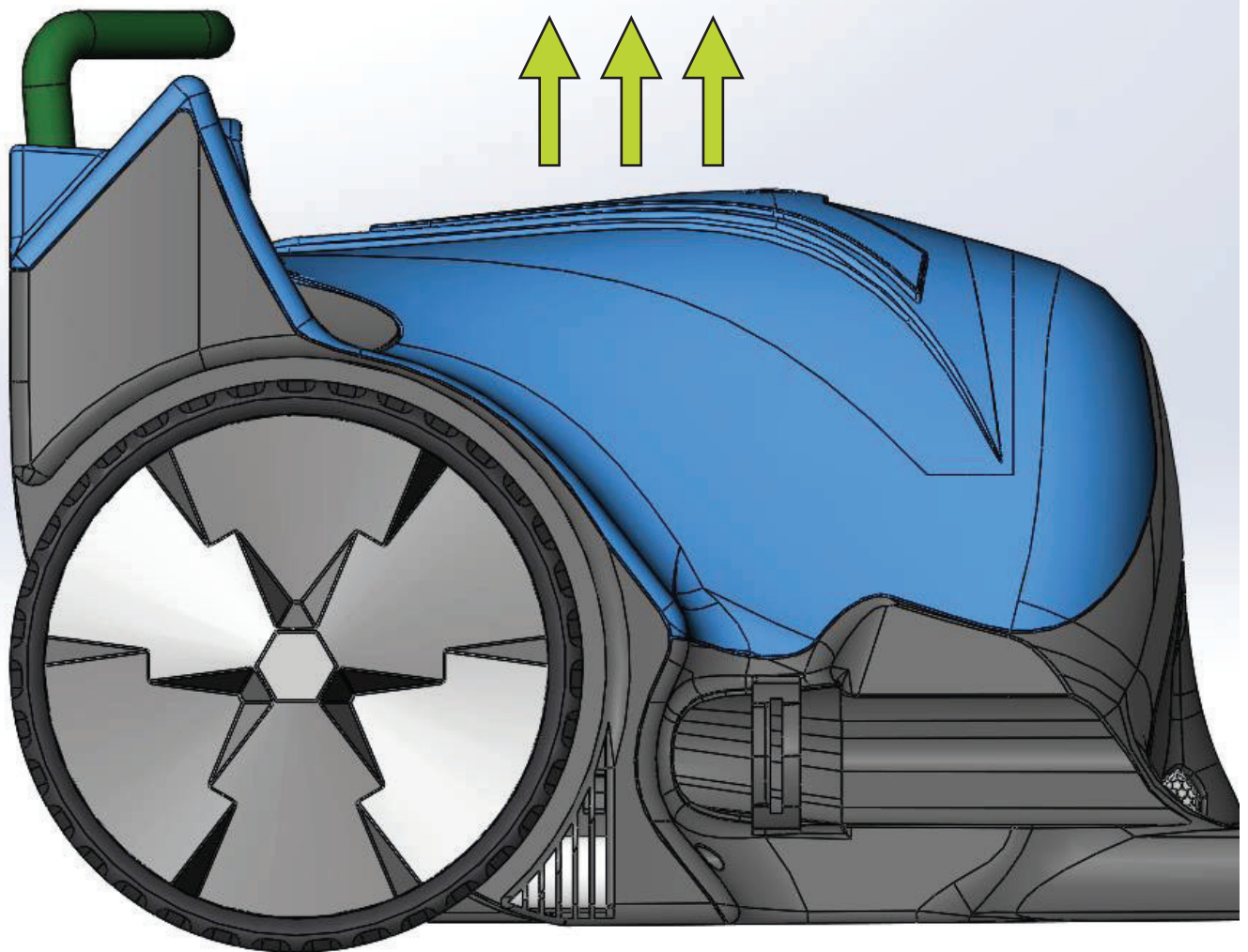
NOTE! Disconnect all power before starting service!



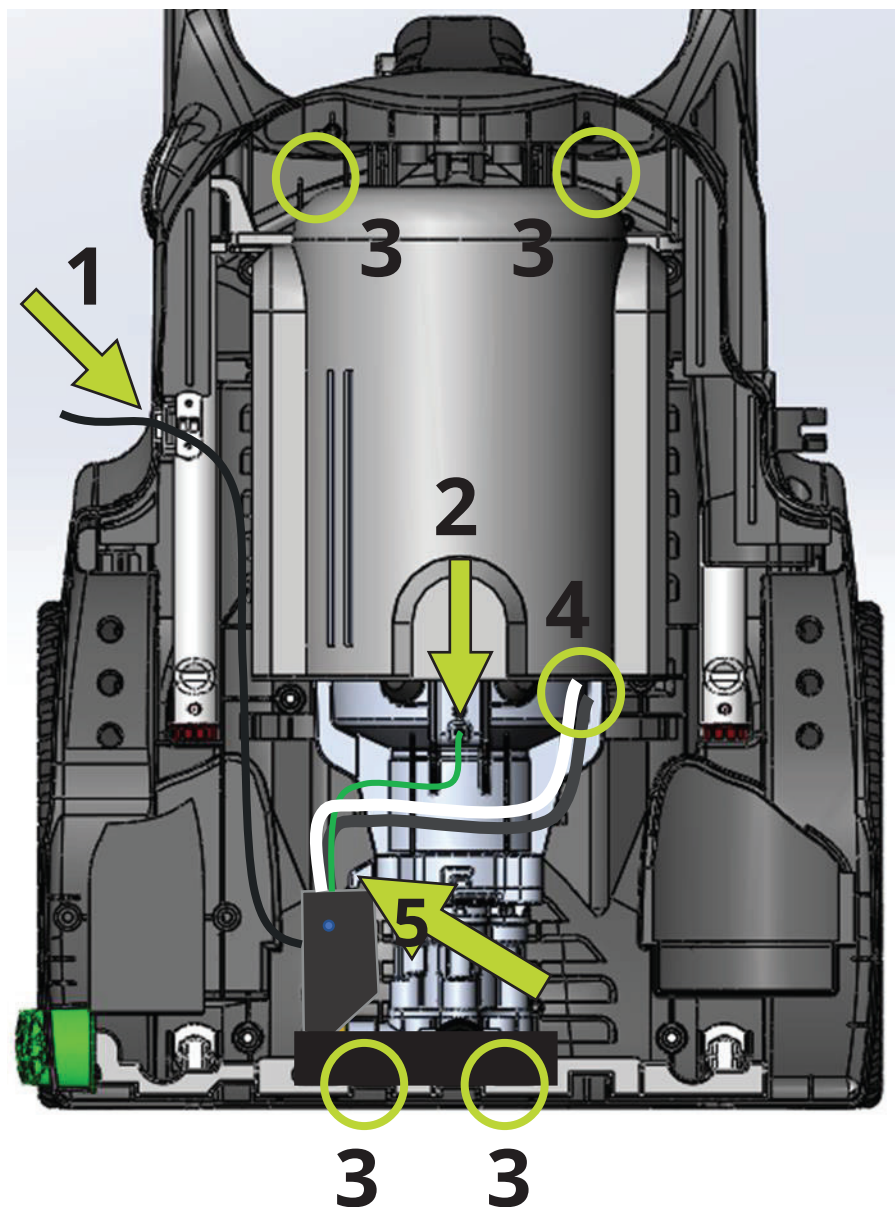
2

Take off the water filter if you have not already done so. It should now be possible to remove the front cover marked here in blue.

The aluminum bracket marked in green will come off with the front cover.



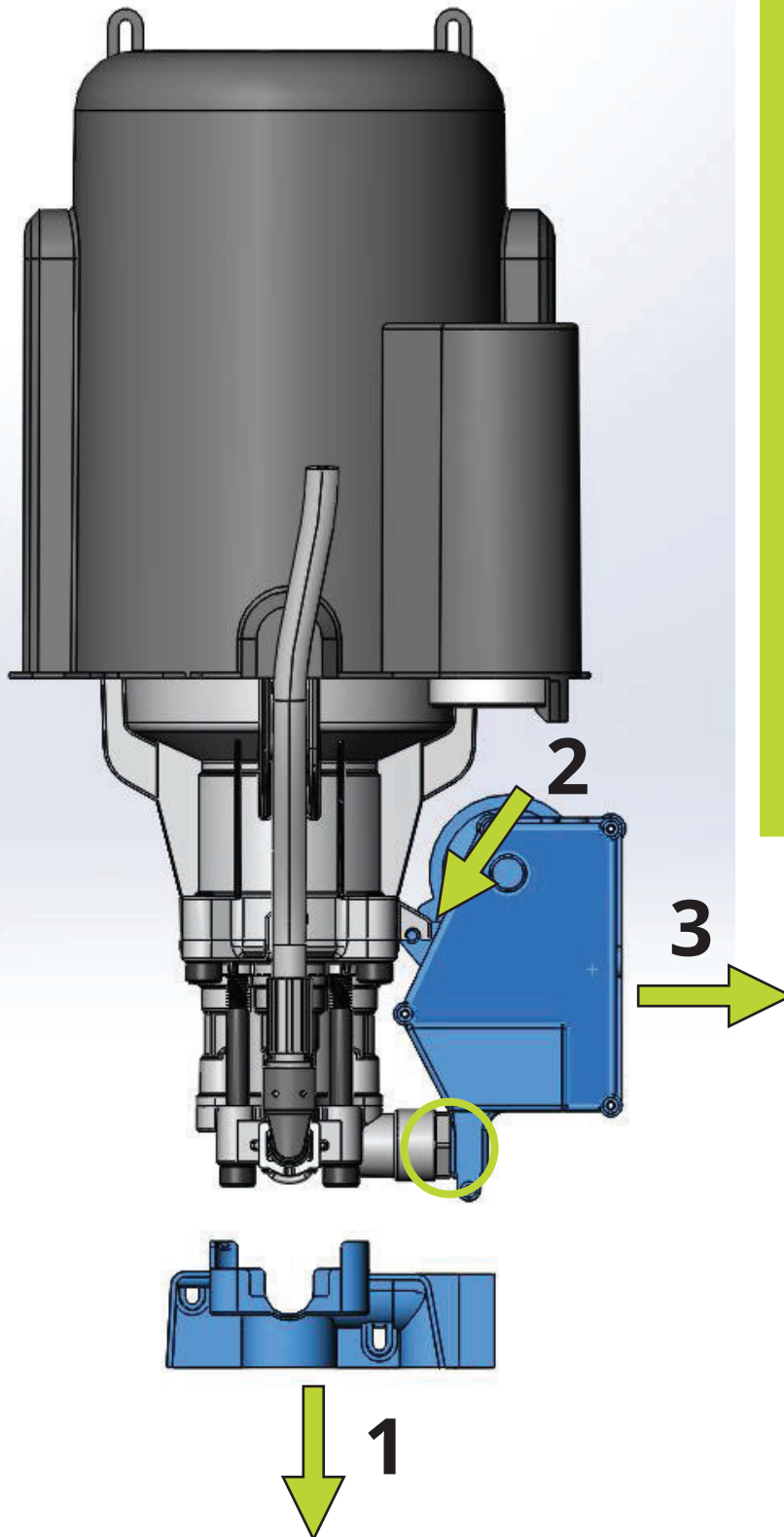
3



You must loosen the motor and pump to be able to unscrew the electrical box:

- 1) Unplug the power cord by pulling it straight up from the cover. It is not necessary to unscrew.
- 2) Unscrew the grounding from the motor (Phillips screw).
- 3) Motor and pump are attached in 4 places, 2 screws on the motor cover and 2 screws on the pump cover. Loosen all four screws.
- 4) Route the cables that go to the motor. They are joined with shovel connectors. Redeem these.
- 5) Turn the motor 180 ° to get to the screw that holds the electrical box. It is not necessary to disconnect the high pressure hose.

4



1) Release the plastic cover located on the pump. It is attached with two plastic clips that sit diagonally opposite each other

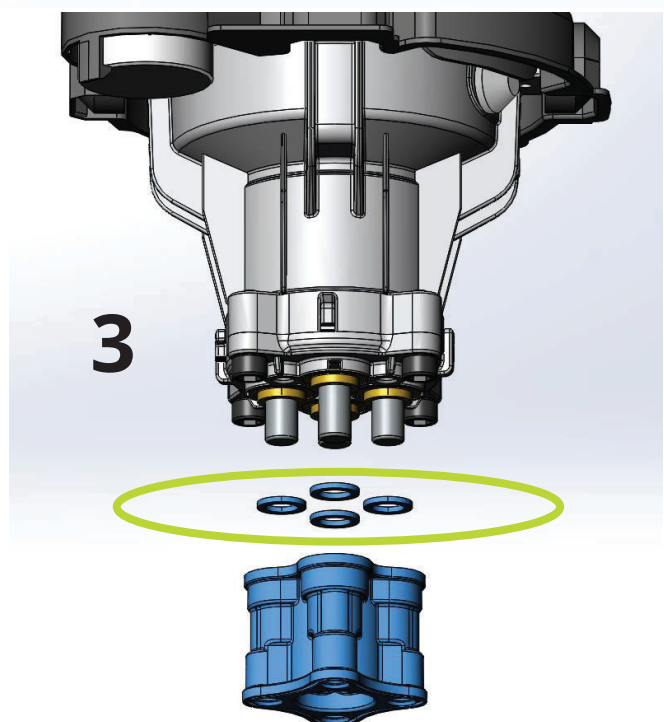
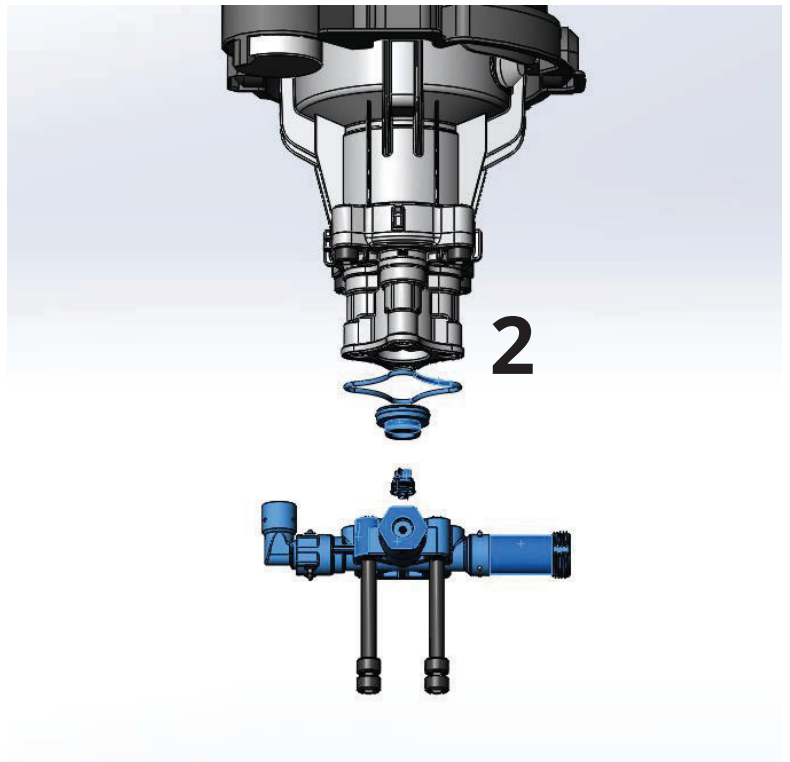
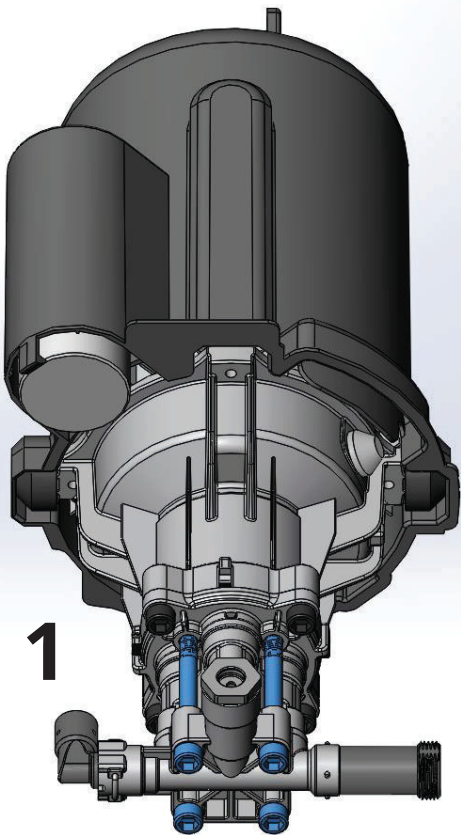
2) Loosen the screw that secures the electrical box.

3) Grasp the upper part of the electrical box and pull. The box should detach from the pressure switch (in the circle) with a pop

5

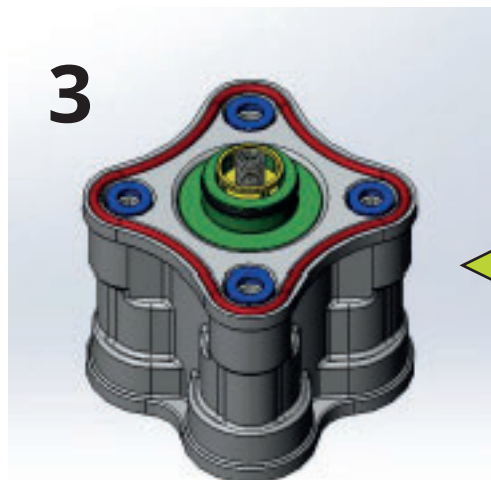
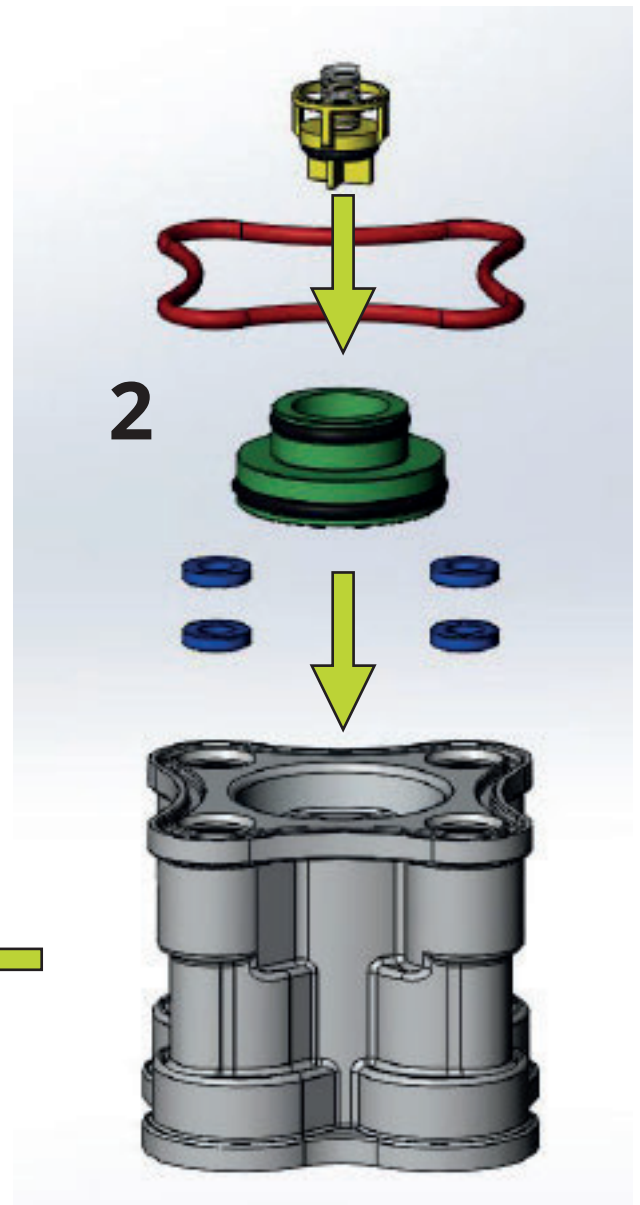
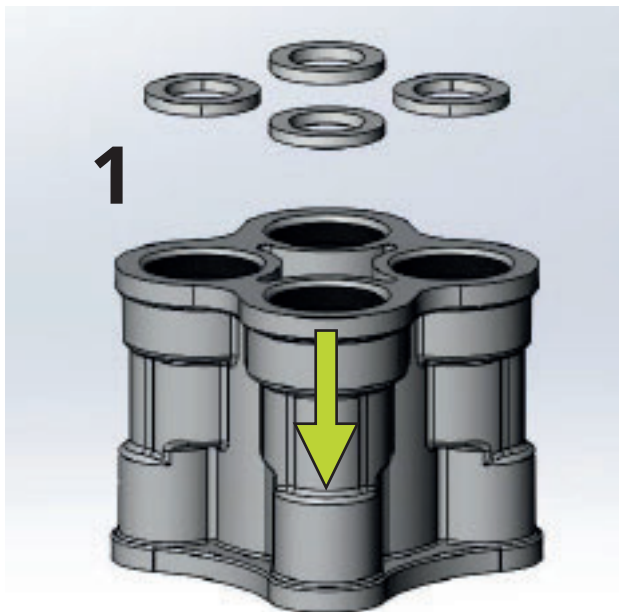
The pump housing and pump head are fixed with four screws.

1. Loosen the screws and set them aside.
 2. You should now be able to pull off the pump head itself, as well as the valve that sits between the pump head and the pump housing.
- Finally, remove the pump housing. Some machines are equipped with 4 nylon discs, if your machine has this, put these aside.



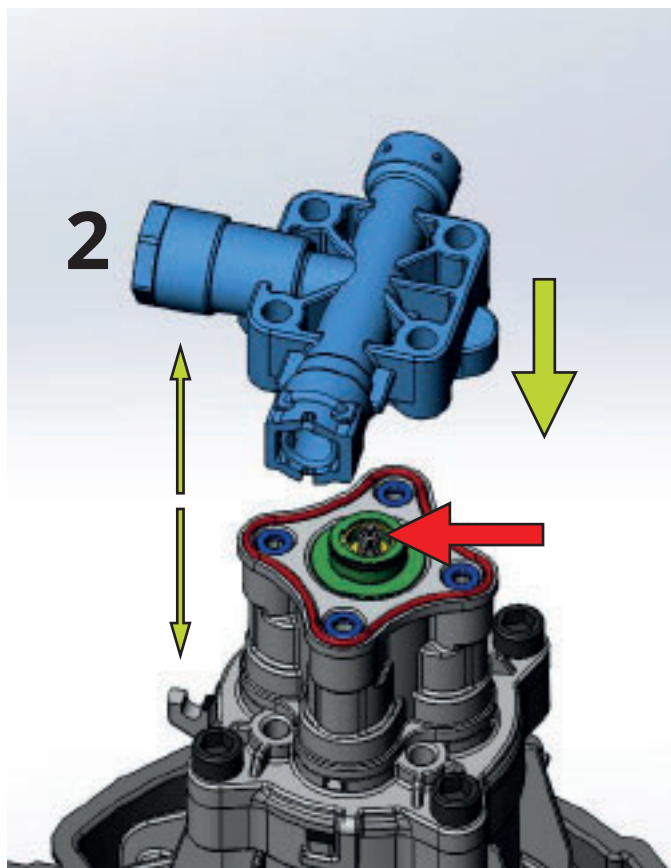
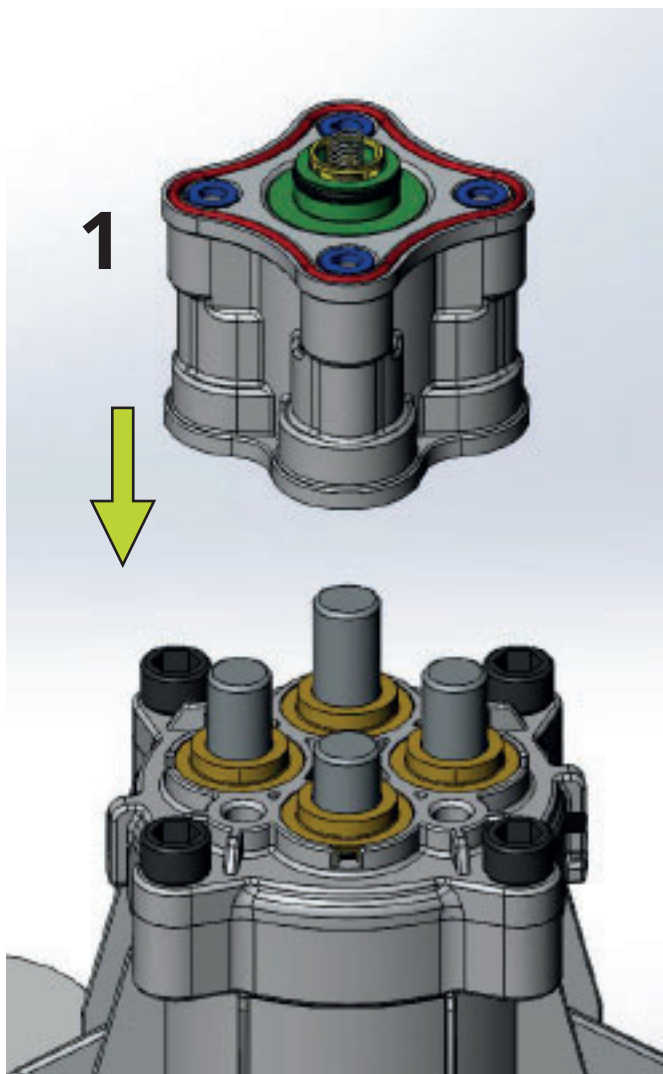
You should now be ready to install the new pump housing and center valve.

1. If your pump was equipped with nylon washers, place these over the rubber seals in the pump housing. Feel free to use a little grease on them so that they do not fall off when you turn the pump housing.
2. Then insert the center valve (green). Use a little grease to lubricate the two o-rings on this before inserting it. Insert the four metal washers (blue) so that they cover the valves. Lubricate the gasket (red) and place it in the slot. Insert the valve (yellow) into the center valve (green), taking care of the spring so that it does not fall off.

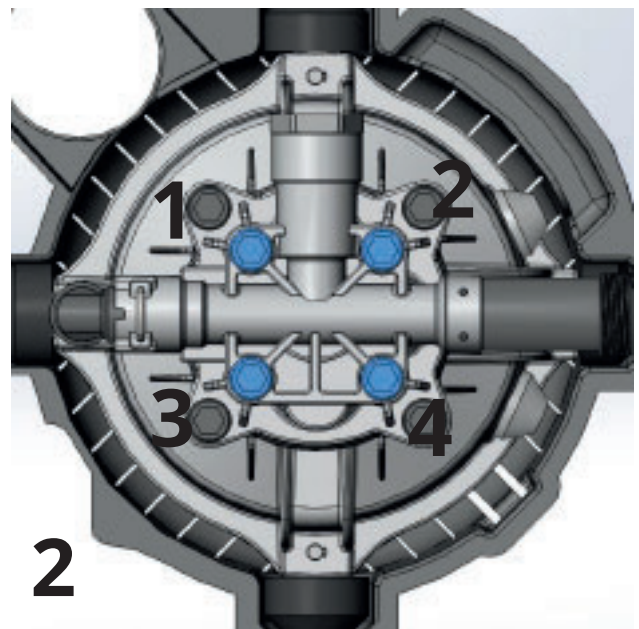
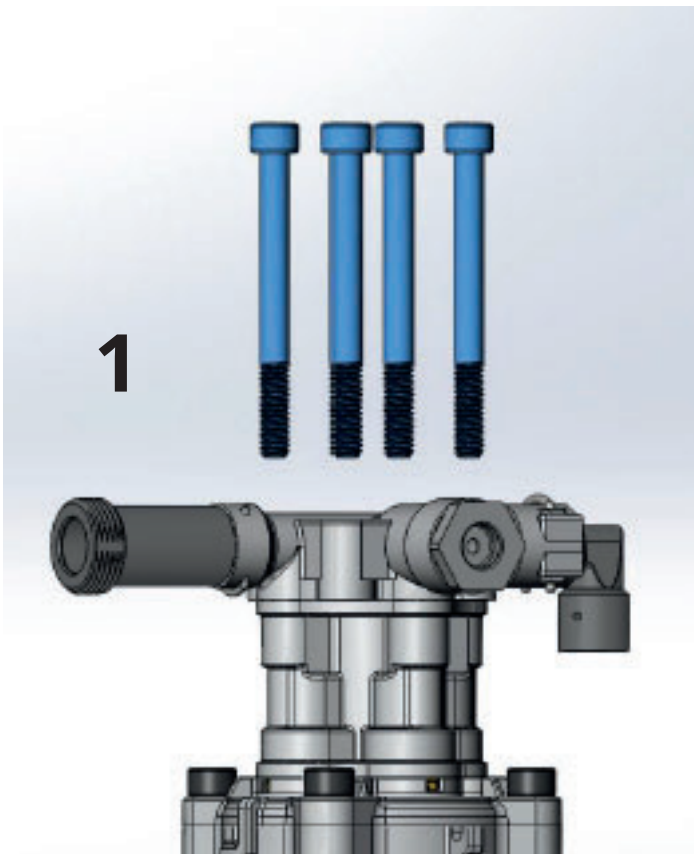


Now you are ready to put the pump housing back on the engine.

1. Thread the pump housing over the exposed pistons on the engine. Since the pump housing is symmetrical, it can be mounted in 4 different ways. It does not matter which way you mount it.
2. Before installing the pump head, make sure that the valve and the spring (red arrow) are correctly positioned. Gently push the pump head down over the center valve green until it stops against the pump housing itself. Position the pump head so that the part with a hexagonal bolt is directly above the screw bracket for the electrical box (thin green arrow).



1. Insert the screws into the holes on the pump head and tighten them, but do not tighten them yet
 2. Make sure that the pump head is correctly positioned. Tighten the screws according to the following pattern 1-4-3-2.
- If you have a torque wrench, set it to 18-20 Nm.

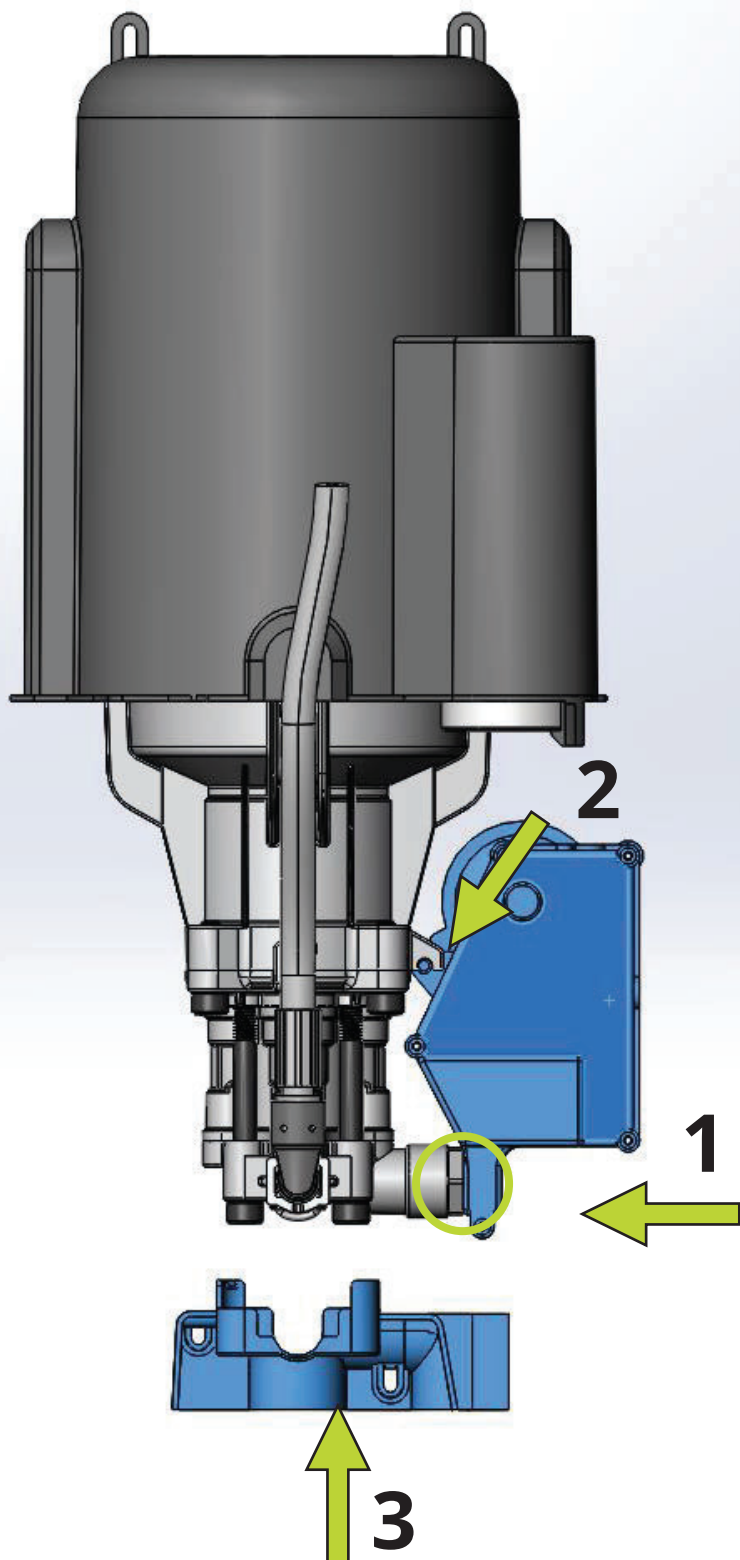


9

1) Press the electrical box hard against the pressure switch. It should come into place with a click.

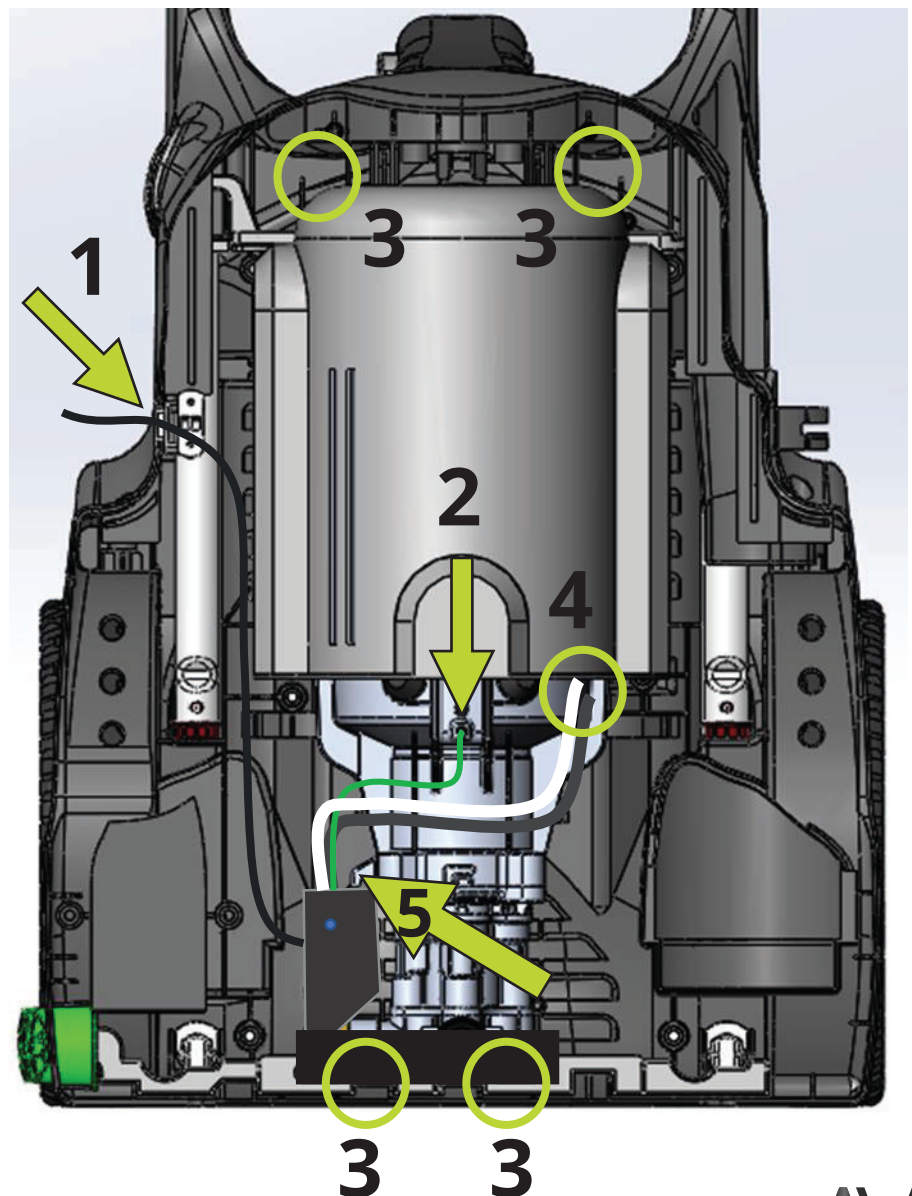
2) Tighten the screws that secure the electrical box.

3) Click on the plastic cover on the pump.

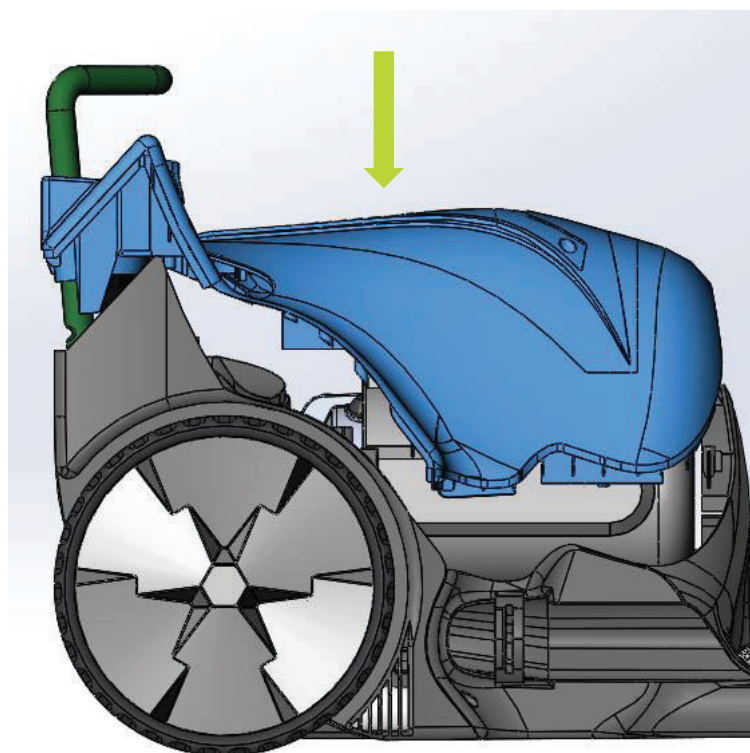
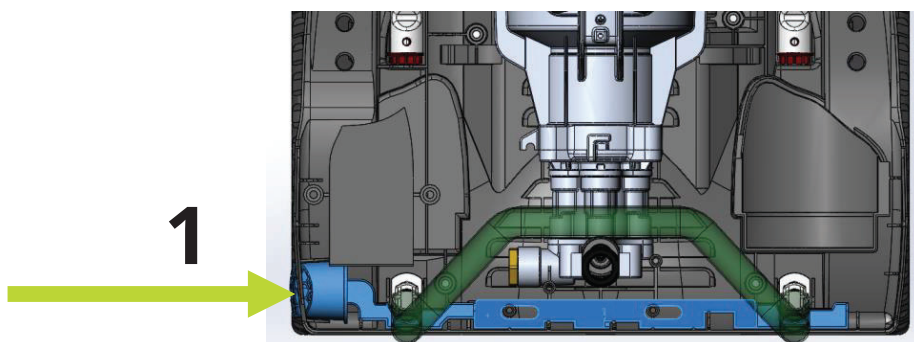


Turn the engine 180 ° back as it was. Check that the high pressure hose on the back is ready for the engine. It should be in a small track.

- 1) Press in place the power cord holder here.
 - 2) Screw the grounding from the motor to the electrical box (star screw).
 - 3) Connect the cables from electrical boxes to the corresponding cables from the motor. Push these into place under the engine cover.
 - 4) If the motor is positioned correctly, the holes in the cover must correspond to the holes in the motor and pump cover. If not, lift the engine and check for foreign objects under it.
- Tighten all four screws.



- To be able to replace the cover (Blue), you must press the bottom bracket release button (1) so that the bottom bracket (Green) can be pushed into place.
- Once you have the bottom bracket and the locking rail in place, you can start putting on the cover.
- Make sure that all support structures and lips on the foot cover end up on the inside before screwing the machine back together. It may take some effort to achieve this.



Raise the machine.

Fasten the six screws you removed in the first step.

It is easiest to start with the screws at the bottom, then the top ones, and finally the ones in the middle. Make sure all lips and support structures on the front cover are in correct position as you screw in the screws.

Do not over tighten the screws, they are threaded in plastic.

The machine should now be ready for use.

