

Switching the internal pipe PG1 ogPG4

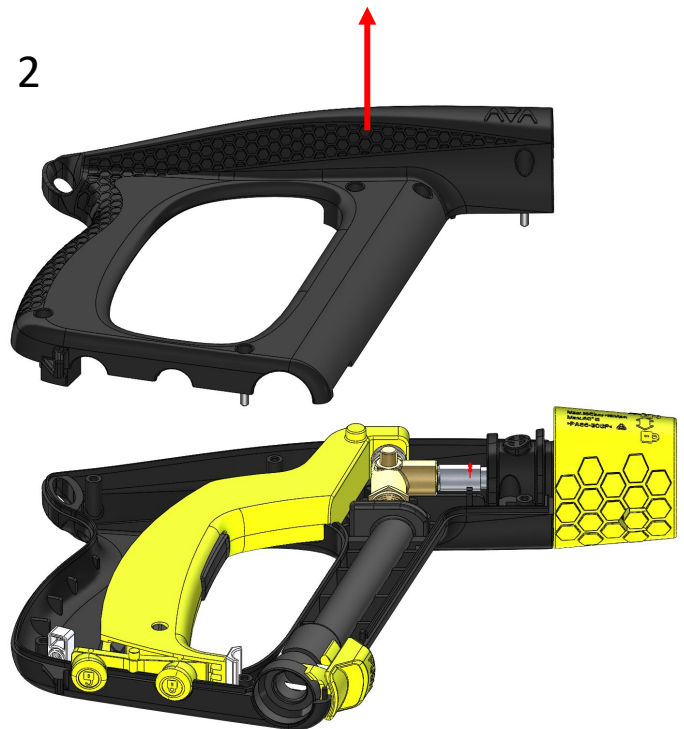
To access the interior of the gun, you will need a Phillips screwdriver.

1. Start by unscrewing all 8 screws.
2. Lift off the cover from the same side as you removed the screws.
3. Hold the parts marked with a red circle with one hand, then grab the black tube and lift it out. It's possible that you'll have to let the brass valve move a little to get the pipe out.
4. When the pipe is out, remove the locking clip and the switch. These must be placed on the new pipe.
5. Locate the new tube. Check that the O-ring fits in the area marked in blue. If it is missing, remove it from the tube you removed.
6. Place the switch and locking clip on the tube.
7. Insert the thinnest part of the pipe into the brass valve. You need to lift the brass valve a little to get the pipe in place.
8. Should you be unlucky enough that the exhaust, valve or front piece comes loose, there is a matching hole in the cover to put them back in place. Make sure that you get the spring between the exhaust and the valve.
9. With all the parts in place, simply replace the cover you removed in step 2 and secure it with the screws you removed in step 1.

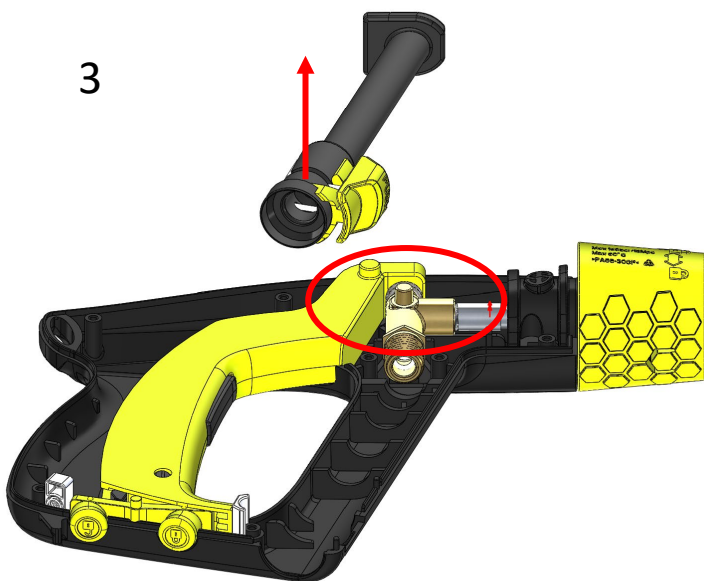
1



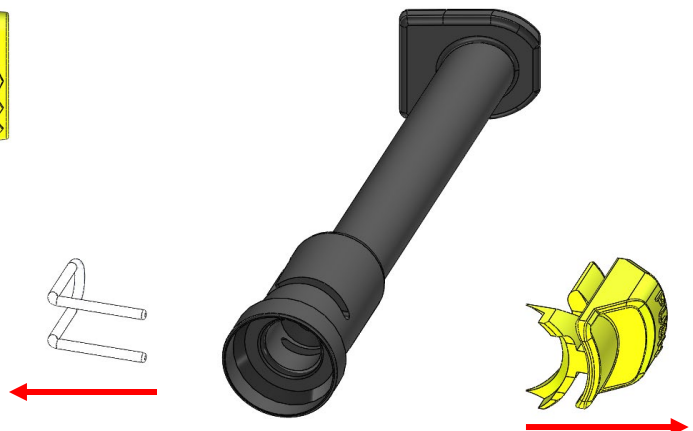
2



3



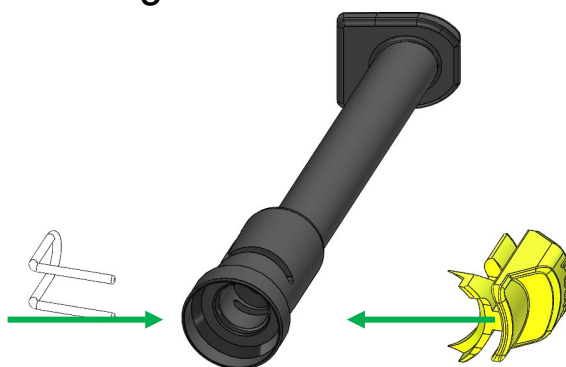
4



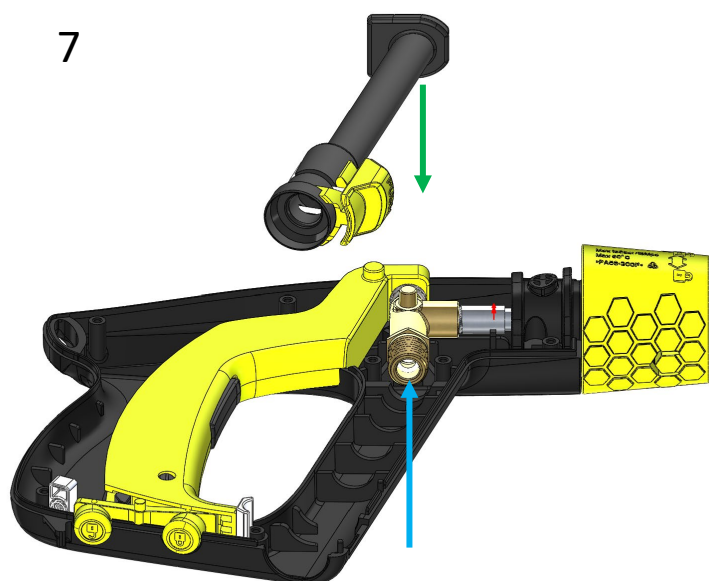
5



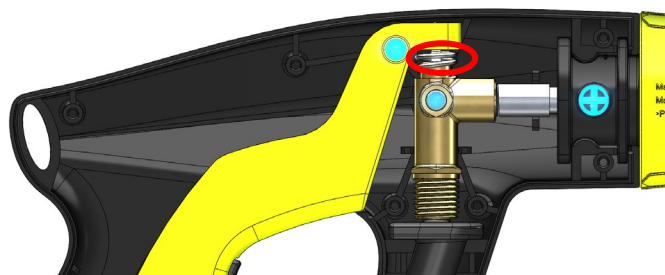
6



7



8



9



Illustration

